



Z2FS6...type Modular Restrictive Check Valve

Z2FS6...4XJ...type

Size 6

Max. Working Pressure: 315 bar

Max. Flow: 80 L/min



Contents

Function and configurations	02
Specifications	03
Symbols	03
Technical data	04
Characteristic curves	04
Unit dimensions	05

Features

- Sandwich plate valve
- Porting pattern to DIN 24 340 form A and ISO4401
- 3 adjustment elements:
 - Screw with locknut and protective cap
 - Two insert pressure relief valve
 - Rotary knob with scale
- For limiting the main or pilot fluid flow of 2 actuator connections
- For meter-in or meter-out control

Function and configuration

Z2FS6 type valve is a double throttle check valve with sandwich plate structure. It is used for the main or pilot flow limitaion of one or two actuator ports. In the opposite direction, fluid flows freely through the check valve.

For meter-in control fluid passes from port A1 to port A2 via the throttling point (1), which is made up of the valve seat (2) and the throttling spool (3). The throttling spool (3) is axially adjustable through the adjustment screw (4).

Fluid flows from A2 to A1, valve seat (2) is opened against spring (5) and valve acts as check valve. Depending on the installation position, the throttling effect may be arranged as a meter-in or a meter-out control.

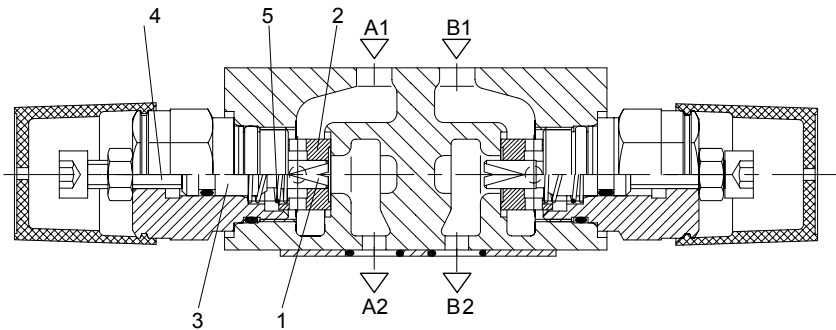
Main flow limitation(Z2FS6.../2Q)

In order to change the velocity of an actuator (limiting of main flow), the double throttle/check valve is installed between the directional valve and the sub-plate.

Pilot flow limitation(Z2FS6.../1Q)

In order to limit the pilot flow, the double throttle/check valve is installed between the main valve and the pilot valve.

Type: Z2FS6-2-4XJ/2Q



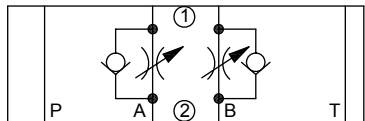
This installed position is for meter-in control

Specification

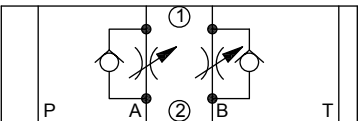
Z2FS	6			4XJ		*
Modular restrictive check valve				Further details in clear text		
Nominal size 6 = 6				No code = NBR seals V = FKM seals		
Throttle/check valve ports A and B = -				1Q = With fine control		
Throttle/check valve port A = A				2Q = Standard version		
Throttle/check valve port B = B				4XJ = Series 40J to 49J (40J to 49J: unchanged installation and connection dimensions)		
Screw with locknut and protective cap = 2						
Lockable rotary knob with scale = 3						
Rotary knob with scale = 7						

Symbols (① = valve side, ② = sub-plate side)

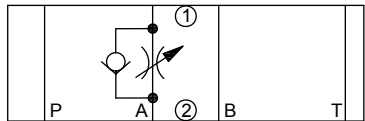
Type:Z2FS6-...-4XJ/ (meter-in control)



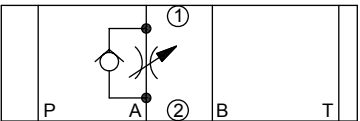
Type:Z2FS6-...-4XJ/ (meter-out control)



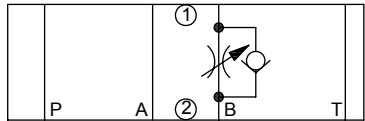
Type:Z2FS6A-...-4XJ/ (meter-in control)



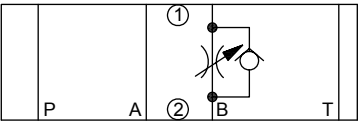
Type:Z2FS6A-...-4XJ/ (meter-out control)



Type:Z2FS6B-...-4XJ/ (meter-in control)



Type:Z2FS6B-...-4XJ/ (meter-out control)



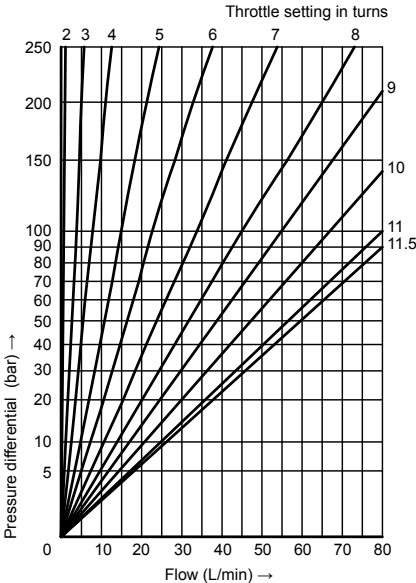
Technical data

Fluid		Mineral oil suitable for NBR and FKM seal
		Phosphate ester for FKM seal
Fluid temperature range	°C	-30 to +80 (NBR seal)
		-20 to +80(FKM seal)
Viscosity range	mm ² /s	10 to 800
Degree of contamination		Maximum permissible degree of fluid contamination: Class 9. NAS 1638 or 20/18/15, ISO4406
Max. working pressure	bar	315
Max. flow-rate	L/min	80
Weight	kg	Approx.1.0

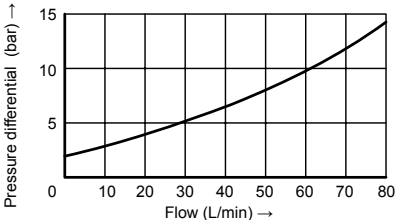
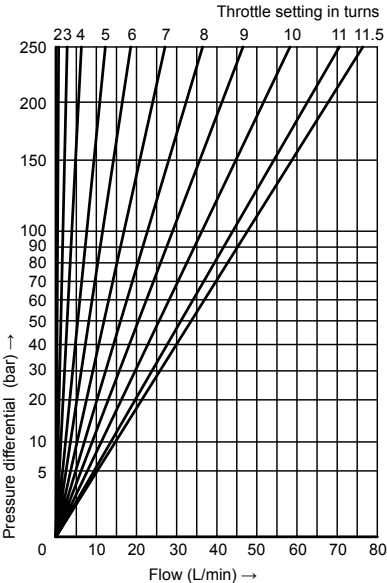
Characteristic curves

(Measured at t=40°C ±5°C , using HLP46)

ΔP-Q_v curve-Z2FS6-...-4XJ/2QV



ΔP-Q_v curve-Z2FS6-...-4XJ/1QV

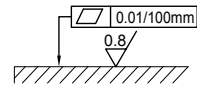
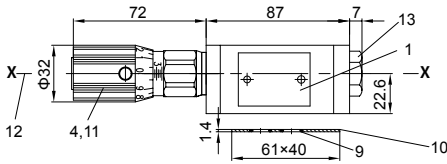


Through check valve (throttle closed)

Unit dimensions

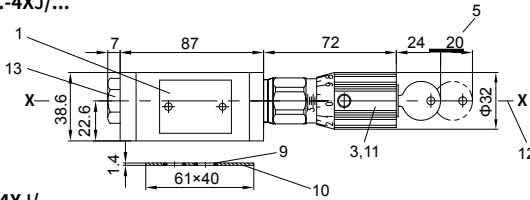
(Dimensions in mm)

Type: Z2FS6A-...-4XJ/ ...

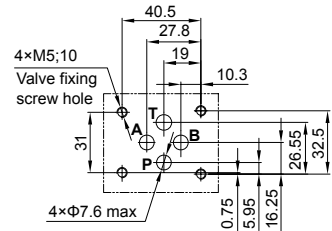
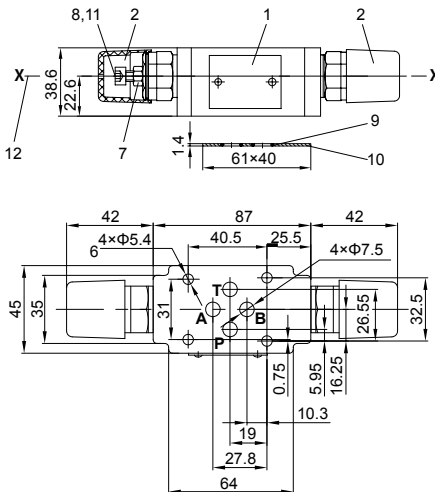


Requirement for mounting surface

Type: Z2FS6B-...-4XJ/ ...



Type: Z2FS6-...-4XJ/ ...



Dimensions of mounting surface

- | | |
|------------------------------------|--|
| 1 Nameplate | 9 O-rings 9.25×1.78 (Port A, B, P, T) |
| 2 Adjustment element "2" | 10 O-ring plate |
| 3 Adjustment element "3" | 11 For all adjustment elements: |
| 4 Adjustment element "7" | turn anti-clockwise=increases flow |
| 5 Space required to remove the key | turn clockwise=decreases flow |
| 6 Valve fixing holes | 12 To change from meter-in to meter-out, |
| 7 Lockable nut S=10 | rotate the unit around the 'X-X' axis |
| 8 Internal hexagon screw S=5 | 13 End cap S=22 |