



HED1...type Pressure Relay

HED1...4X...type

Max. Working Pressure: 500bar



Contents

Function and configuration	02
Symbols	02
Specification	03
Technical data	04
Characteristic curves	05
Unit dimensions	06

Features

- With or without drain port
- For threaded connection

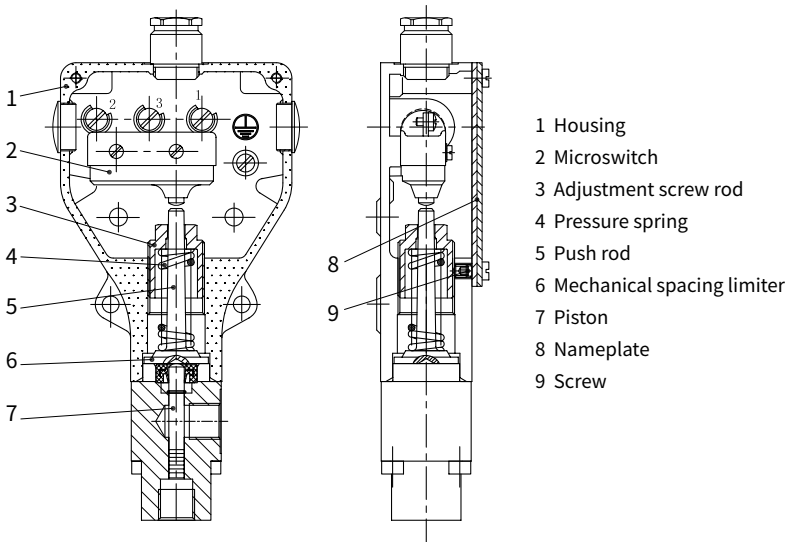
Function and configuration

HED1 type relay is a piston type pressure relay. Is consists of the housing(1), microswitch(2), adjustment screw rod(3), and pressure spring(4).

When the hydraulic system recieves the set pressure, the pressure switch will send out an electric signal to begin sequent operation or security protection by controlling some electric components.

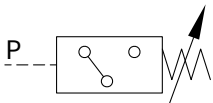
Adjustment of the switching pressure:

To adjust the switching pressure, the nameplate (8) must first be removed then loosen the screw (9). The switching pressure is set by rotating the adjustment screw (3). After adjusting, refit the name plate (8) and tighten the screw (9).

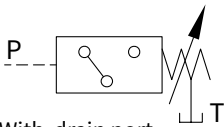


Symbols

Electric circuit



Without drain port



With drain port

Specification

HED1		A	4XJ	/	/	*
Pressure Relay				Further details in clear text		
With drain port		= K		Connection thread		
Without drain port		= O		Inch threaded (G1/4)		
Series 40J to 49J		= 4XJ		No code =		
				2 = Metric threaded (M14×1.5)		
max. adjustable pressure 100bar=100				No code =		
max. adjustable pressure 350bar=350		HED1K		V =		
max. adjustable pressure 500bar=500				NBR seals		
max. adjustable pressure 50bar=50				FKM seals		
max. adjustable pressure 100bar=100		HED1O				
max. adjustable pressure 350bar=350						

Technical data

Fluid		Mineral oil and Phosphate ester			
Fluid temperature range		°C	-30 to +80		
Viscosity range		mm²/s	10 to 800		
Switchover precision		<2% setting range			
Switchover frequency	HED1 KA 4XJ/	Up to 300 times/min			
	HED1 OA 4XJ/	~ 50 (briefly also... 100) /time/min.			
Pressure in drain port		~ 2bar			
Setting ranges for HED 1 KA 4XJ/..(bar)					
Pressure rating	Max. operating pressure briefly	Falling pressure		Rising pressure	
		min.	max.	min.	max.
100	600	3	92	6	100
350	600	6	325	10	350
500	600	10	465	20	500
Setting ranges for HED 1 OA 4XJ/..(bar)					
Pressure rating	Max. operating pressure briefly	Falling pressure		Rising pressure	
		min.	max.	min.	max.
50	80	2	45	3.5	50
100	350	3	82	8	100
350	350	6	295	20	350
Electrical connection			Cable gland (max.cable diameter is 11 mm) PG 11 plug-in connector		
Connection cross section	Cable gland	mm²	~4		
Contact loading	AC	460V, 15A			
	DC	40V, 1A; 125V, 0.4A; 250V, 0.2A			
For DC voltages with inductive loading spark suppression is recommended to increase service life.					
Insulation to DIN40050			IP65		
Weight			0.8kg		

Characteristic curves (Measured at $t=40^{\circ}\text{C} \pm 5^{\circ}\text{C}$, using HLP46)

